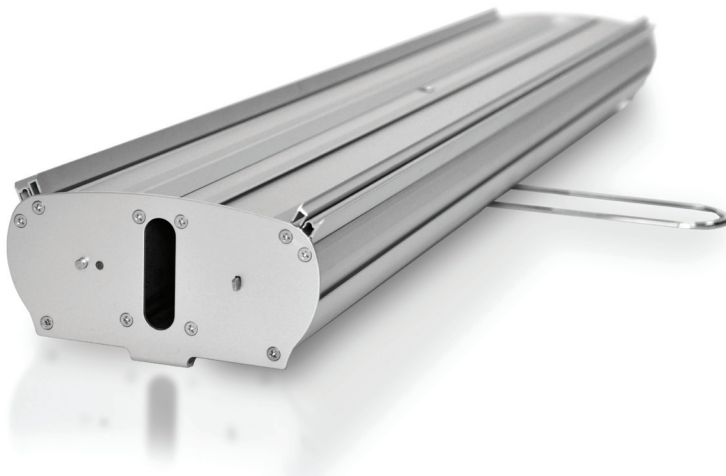


THE DOUBLE

- Heavy gauge aluminum construction
- Finish: **Silver**
- Graphics are held with top clamp rails and bottom adhesive leader films
- Features fixed-height 3-part pole
- Padded carrying case included



Code	Description	Viewable Area
THE DOUBLE		
DRDS34	Silver	33.5" W x 78.5" H

Code	Description
ACCESSORIES	
DRCMCS	Magnetic Top Clamp Connector <i>Purchase 2 to connect 2 stands together</i>

