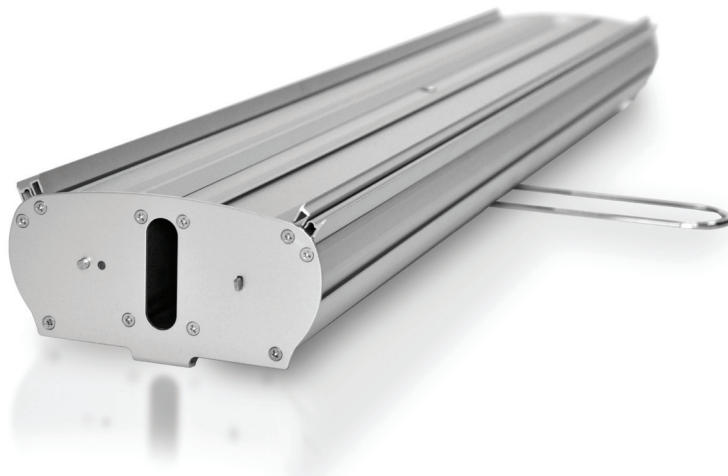


THE DOUBLE

- Heavy gauge aluminum construction
- Finish: **Silver**
- Graphics are held with top clamp rails and bottom adhesive leader films
- Features fixed-height 3-part pole
- Padded carrying case included



| Code | Description | Viewable Area |
|-------------------|-------------|-------------------|
| THE DOUBLE | | |
| DRDS34 | Silver | 33.5" W x 78.5" H |

| Code | Description |
|--------------------|--|
| ACCESSORIES | |
| DRCMCS | Magnetic Top Clamp Connector <i>Purchase 2 to connect 2 stands together</i> |

